

# PLC'S FY 19 IN REVIEW

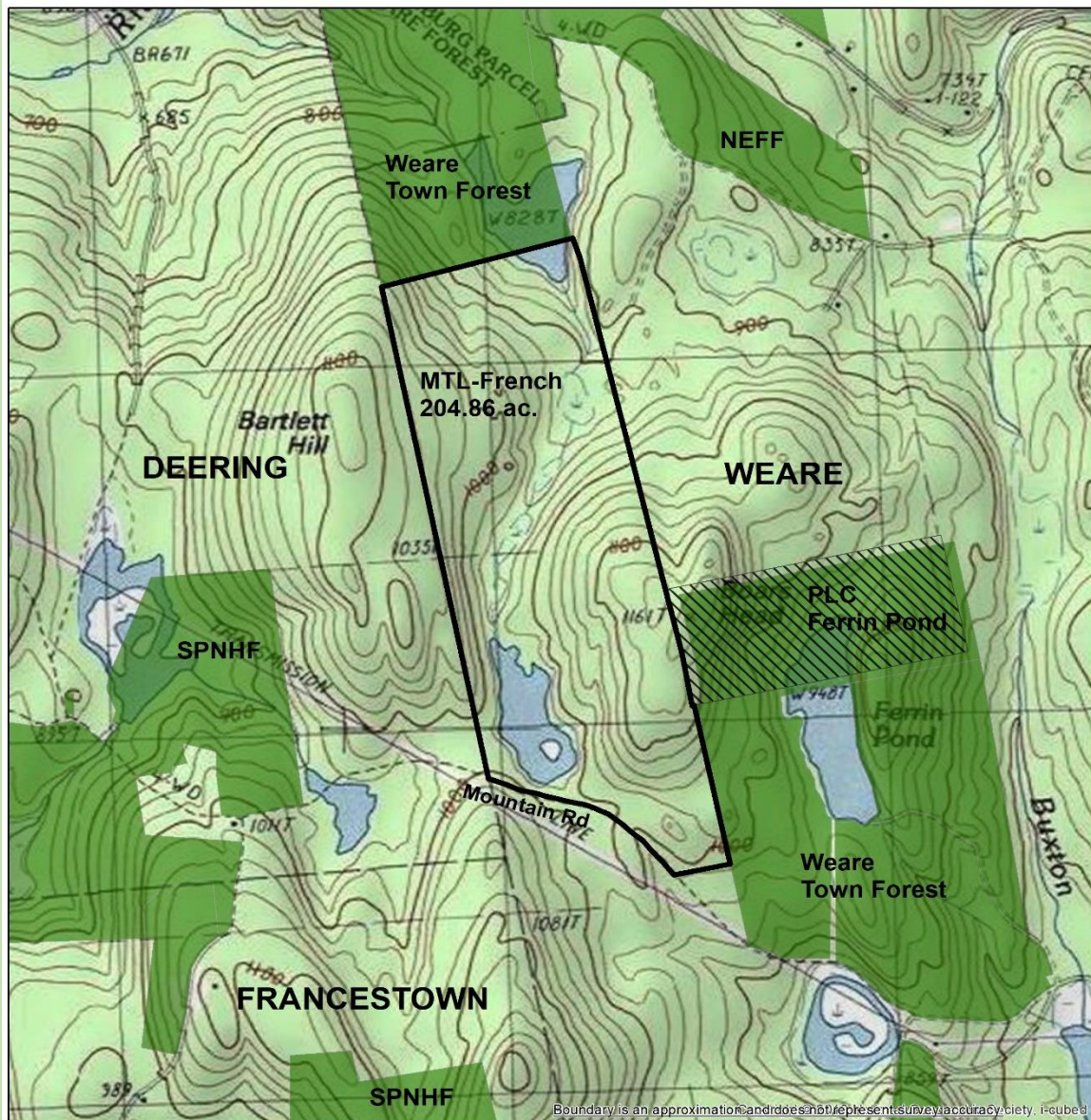
PRESIDENT'S REPORT

49<sup>TH</sup> ANNUAL MEETING

NOVEMBER 2, 2019

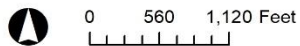
# LAND PROTECTION

# BOB FRENCH PRESERVE (FORMERLY KNOWN AS MEADOWSEND) 205 ACRES - WEARE



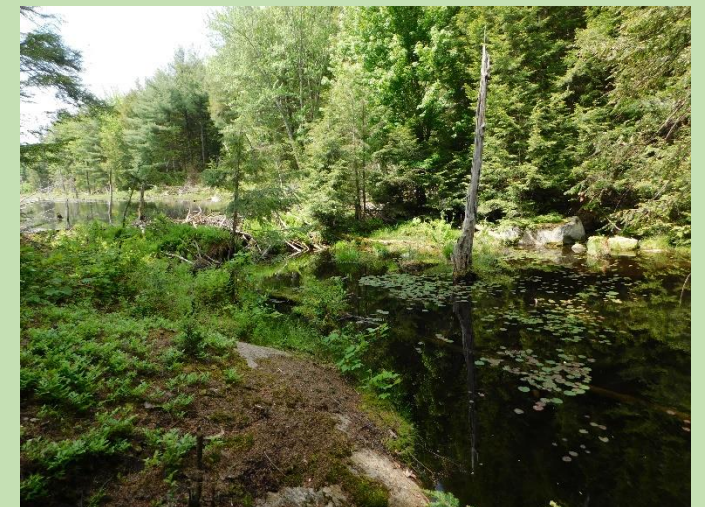
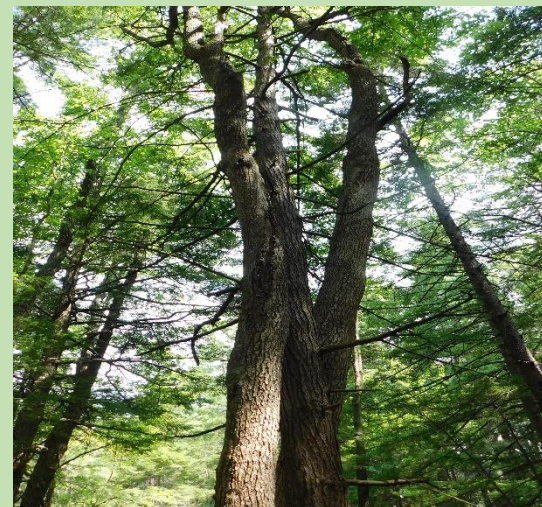
-  MTL-French Lot 410-8
-  PLC Ferrin Pond
-  Conserved/Public Land

**Conservation Lands**  
Robert French Preserve  
204.86 Acres  
Weare, NH



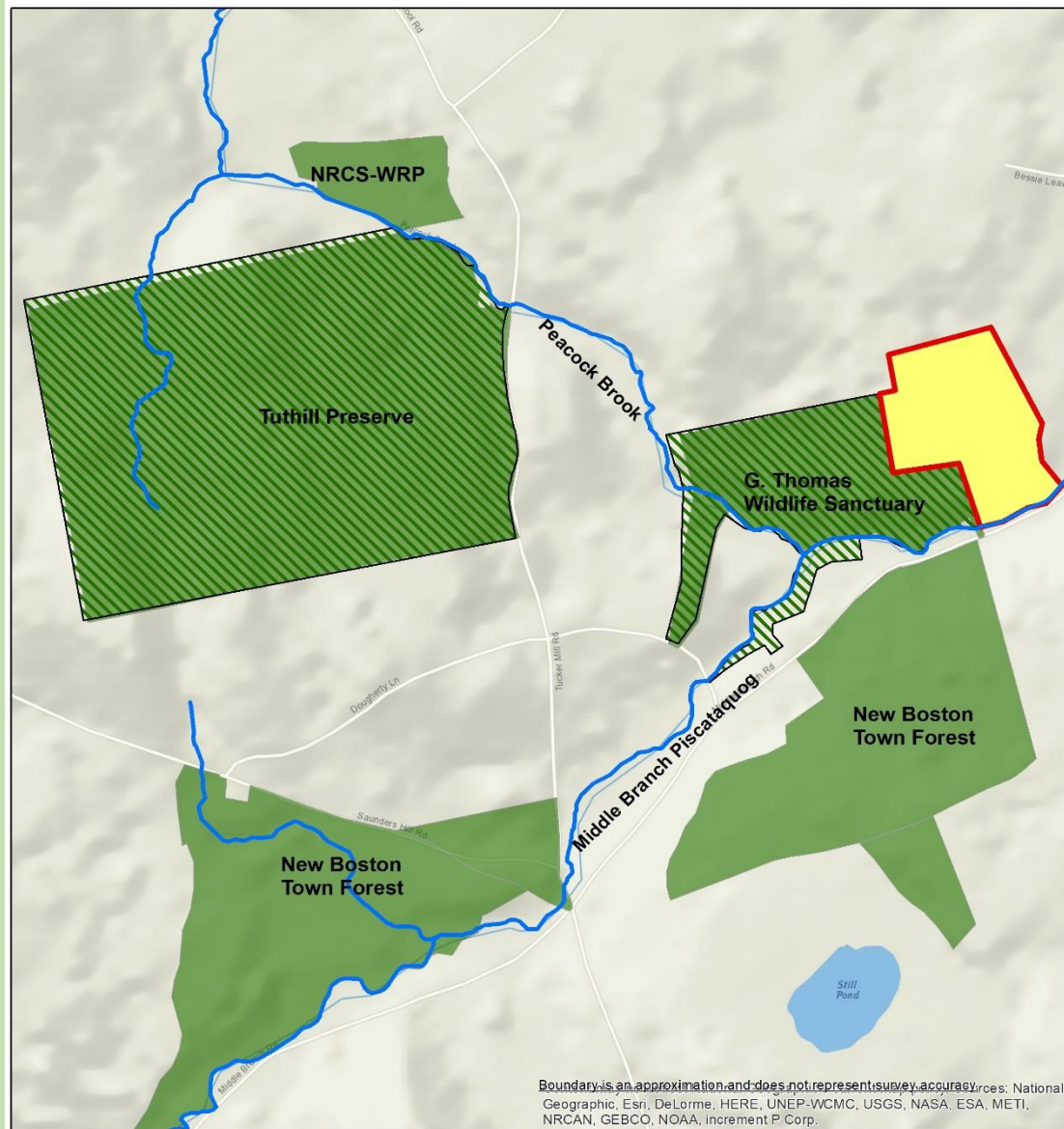
7/24/2018

Map Preparer: T.E. Jones



# HOUGHTON

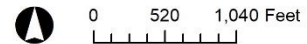
## 30 ACRES, NEW BOSTON




Boundary is an approximation and does not represent survey accuracy. Sources: National Geographic, Esri, DeLorme, HERE, UNEP-WCMC, USGS, NASA, ESA, METI, NRCAN, GEBCO, NOAA, increment P Corp.

-  Streams
-  Houghton Fee
-  PLC Lands
-  Conserved/Public Lands

**Conserved Lands**  
 Houghton Property  
 30 +/- Acres  
 New Boston, NH



5/2/2018  
 Map Preparer: T.E. Jones  




# JENNINGS

## 41 ACRES – GOFFSTOWN (CE)



Boundary is an approximation and does not represent survey accuracy. Uses ESRI, USDA, USGS, AEX, Geomapping, Aerogrid, IGN, IGP, swisstopo, and the GIS User Community

- Jennings CE - 51 ac.
- Jennings Property - 63 ac.

**Aerial Map**  
 Jennings CE  
 51 +/- Acres  
 Goffstown, NH



0 190 380 Feet

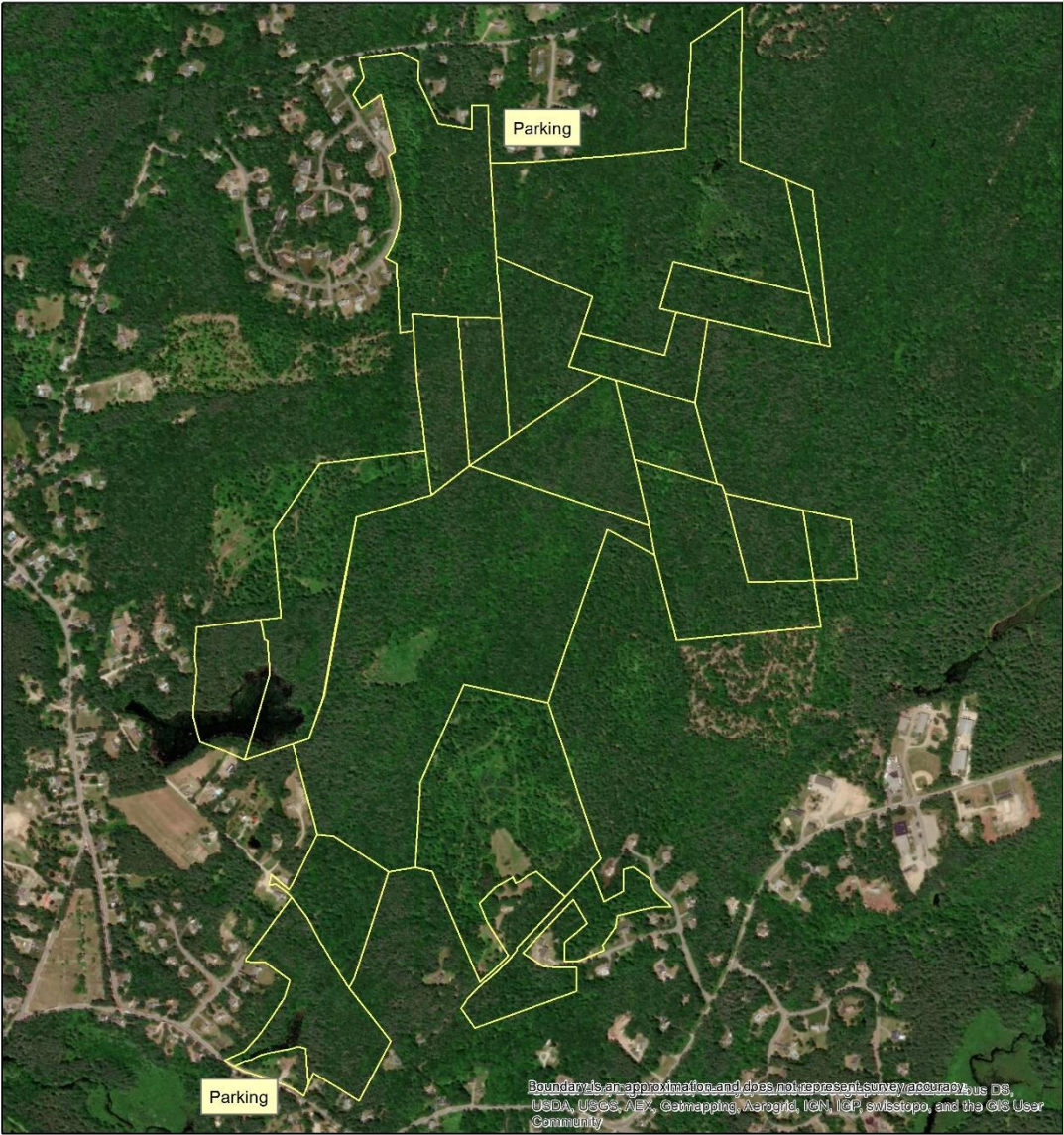
5/18/2018

Map Preparer: T.E. Jones



# HOBART-FESSENDEN WOODS

439 +/- ACRES, BROOKLINE (CE)



 Hobart-Fessenden Woods

### LPC / SC Site Walk

Hobart-Fessenden Woods  
439 +/- Acres  
Brookline, NH

6/20/2018

Map Preparer: T.E. Jones



# PLC - PROTECTED ACRES

2010 – 2019 CUMULATIVE

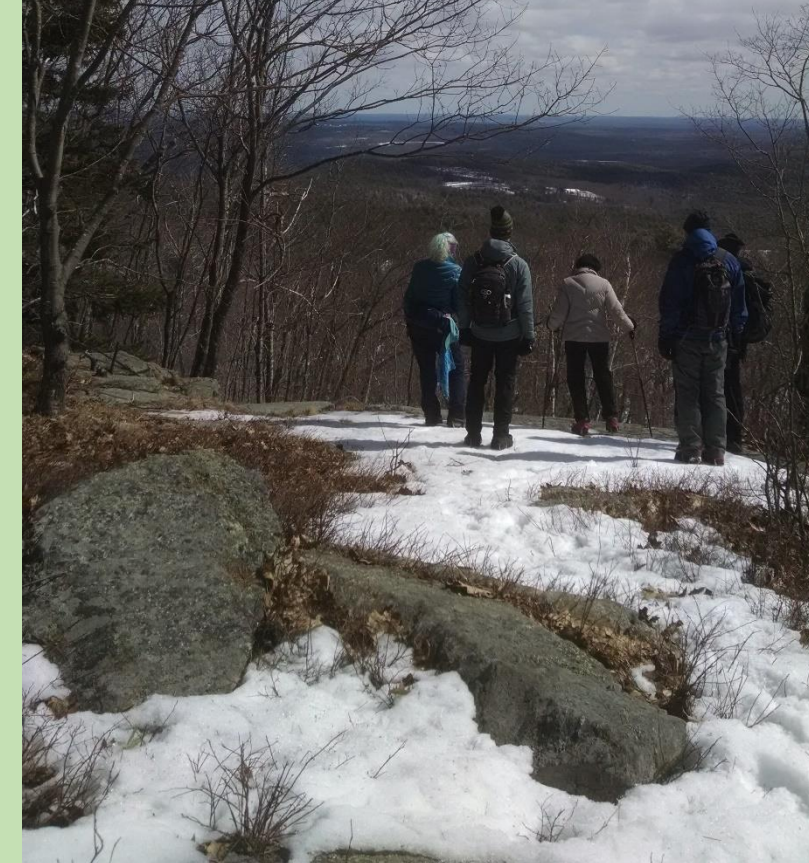


# LAND & EASEMENT STEWARDSHIP



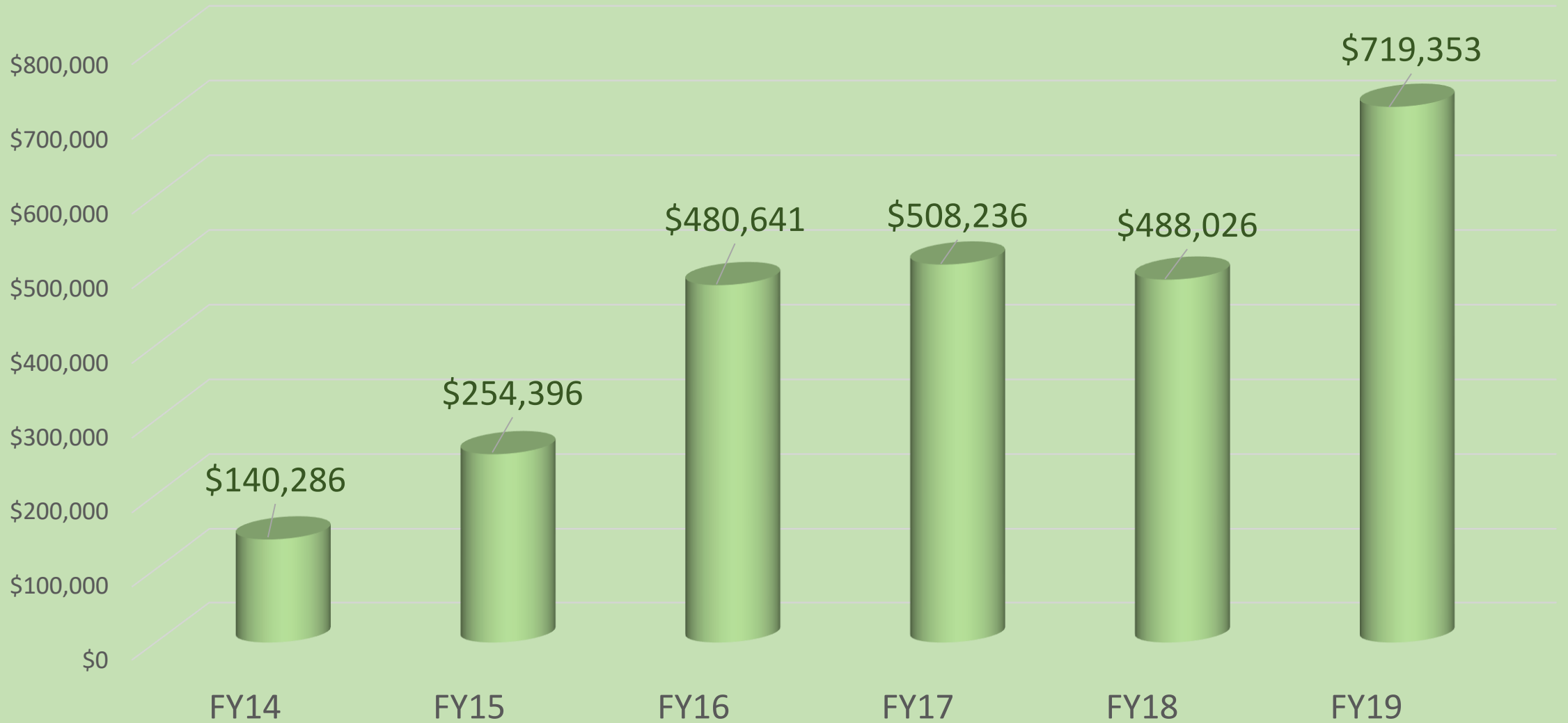


# OUTREACH & EVENTS

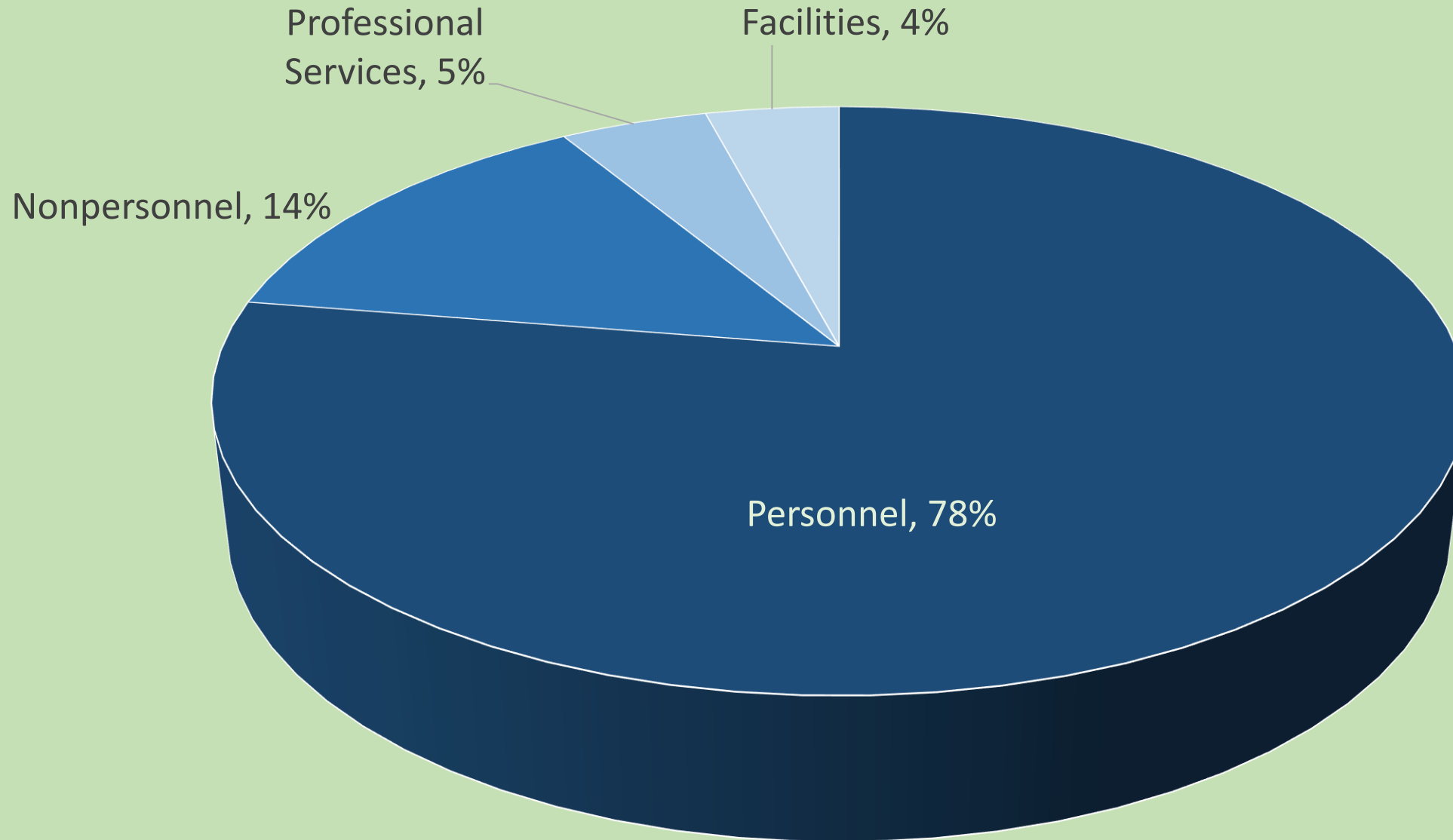


# FINANCIALS

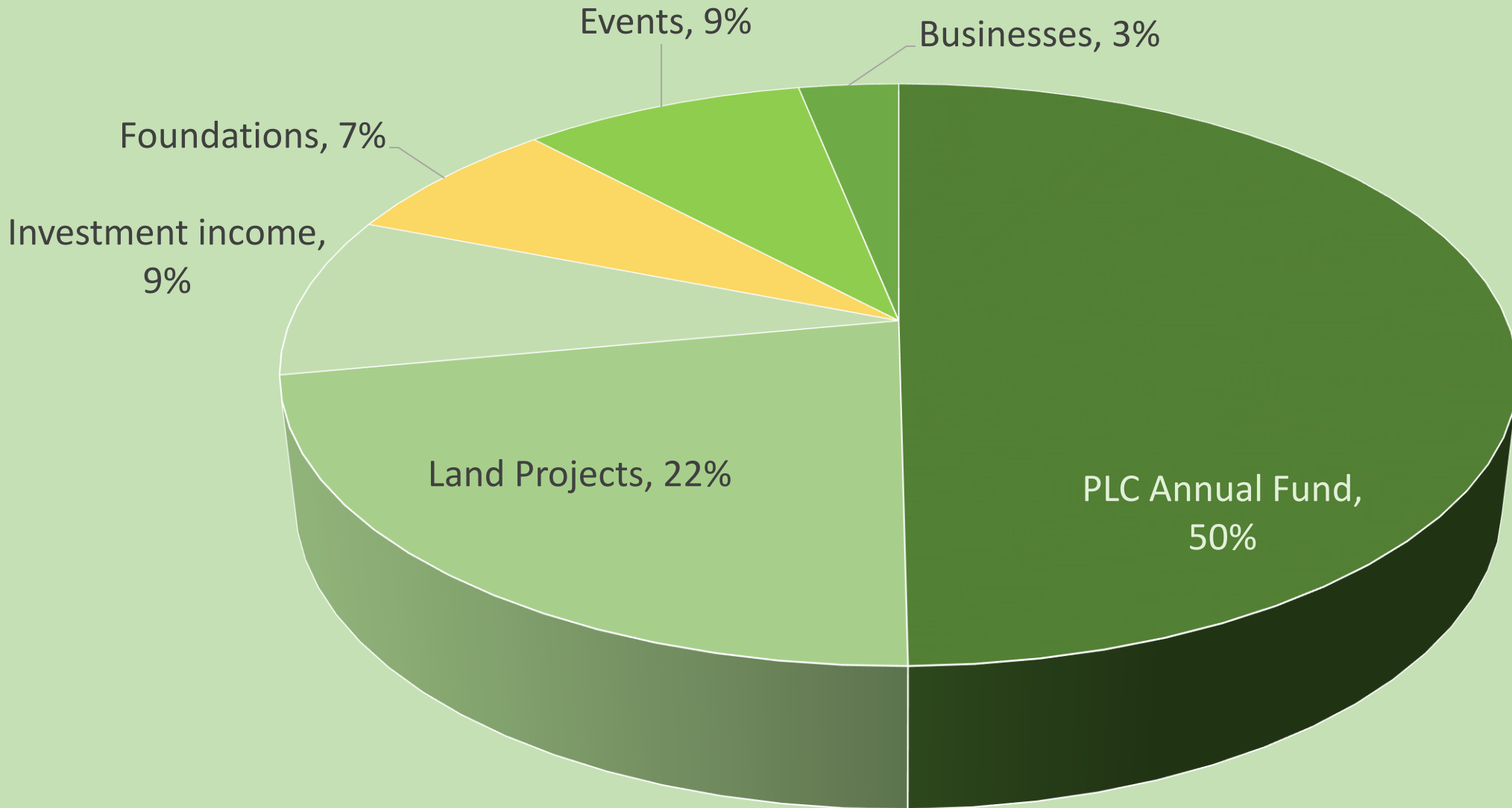
# ALL CONTRIBUTIONS (OPS + PROJECTS) \$ RAISED



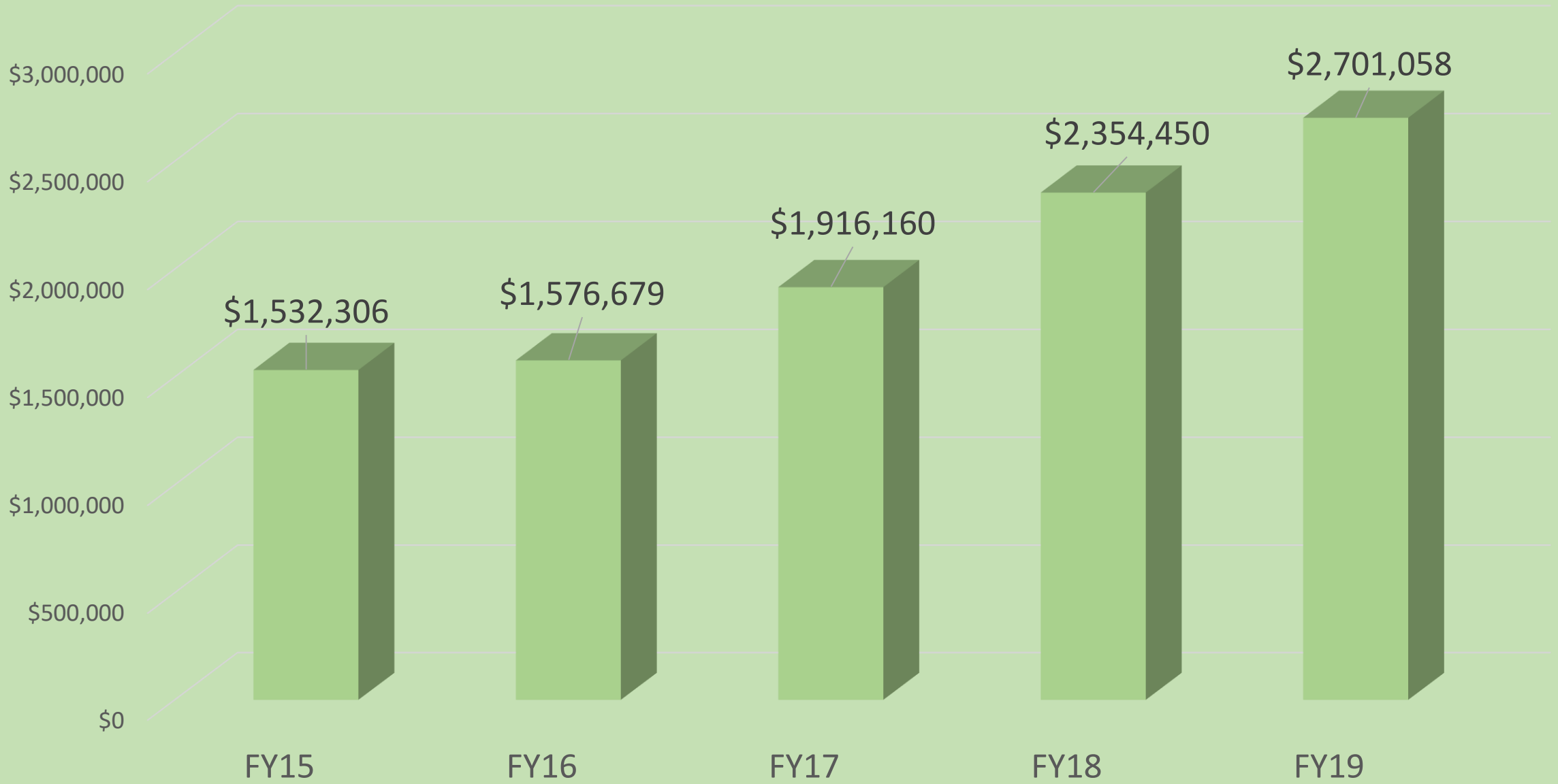
# PLC FY 19 OPERATING BUDGET - EXPENSES



# PLC FY19 Operating Budget - Income Sources

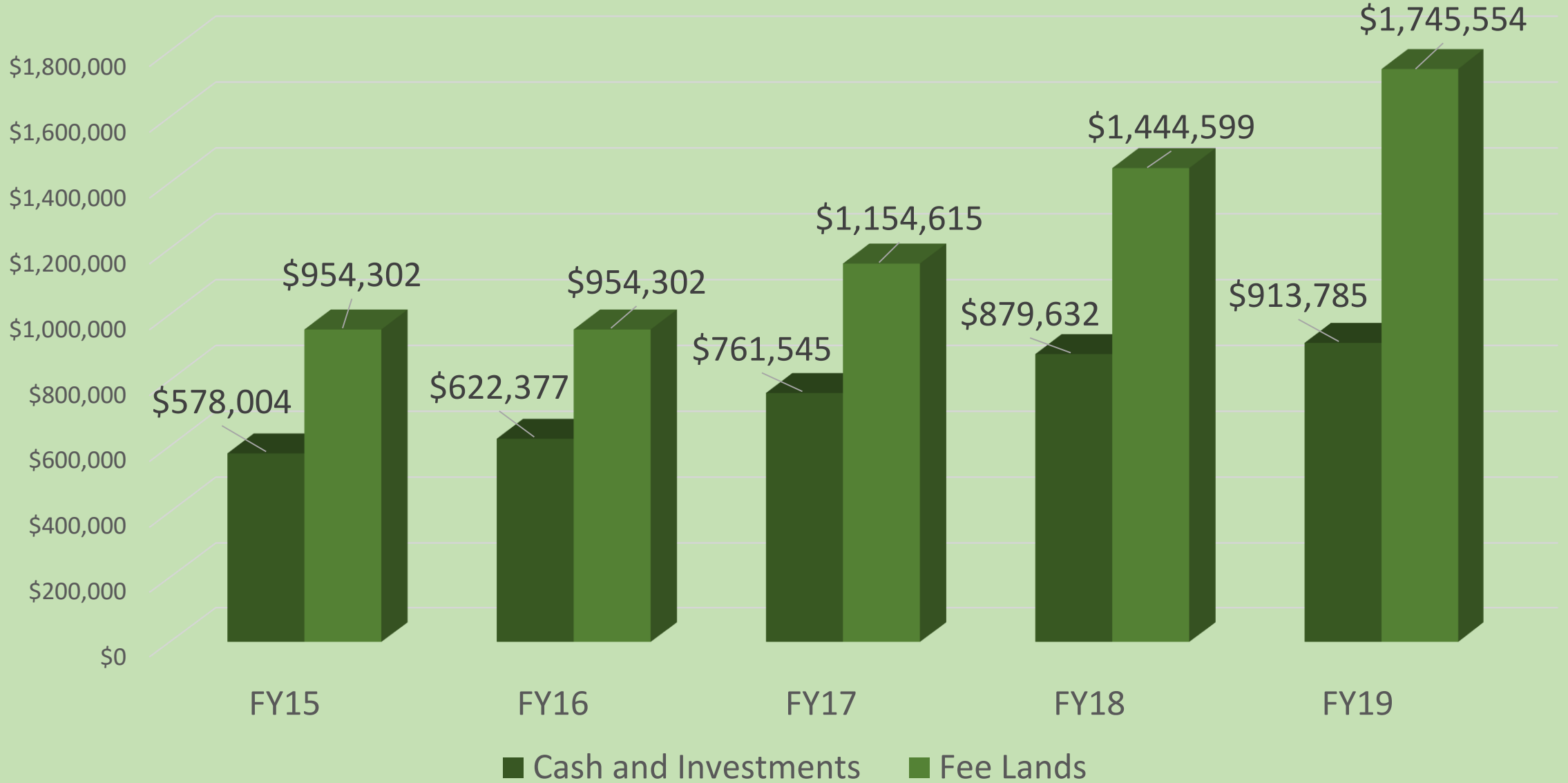


# TOTAL ASSETS





# CASH & INVESTMENTS V. FEE LANDS



# LOOKING AHEAD TO 2020 (AND BEYOND)

- Our 50<sup>th</sup> Anniversary Year!
- Celebrate our history, chart course for our future;
- Keep protecting land while we can – be strategic, be bold.
- Deepen our stewardship – FT staff person, make our lands more welcoming and user-friendly, raise the funds we need to keep our promise of perpetuity;
- Engage and enlist the next generations of PLC people!