

FY 2020 YEAR IN REVIEW

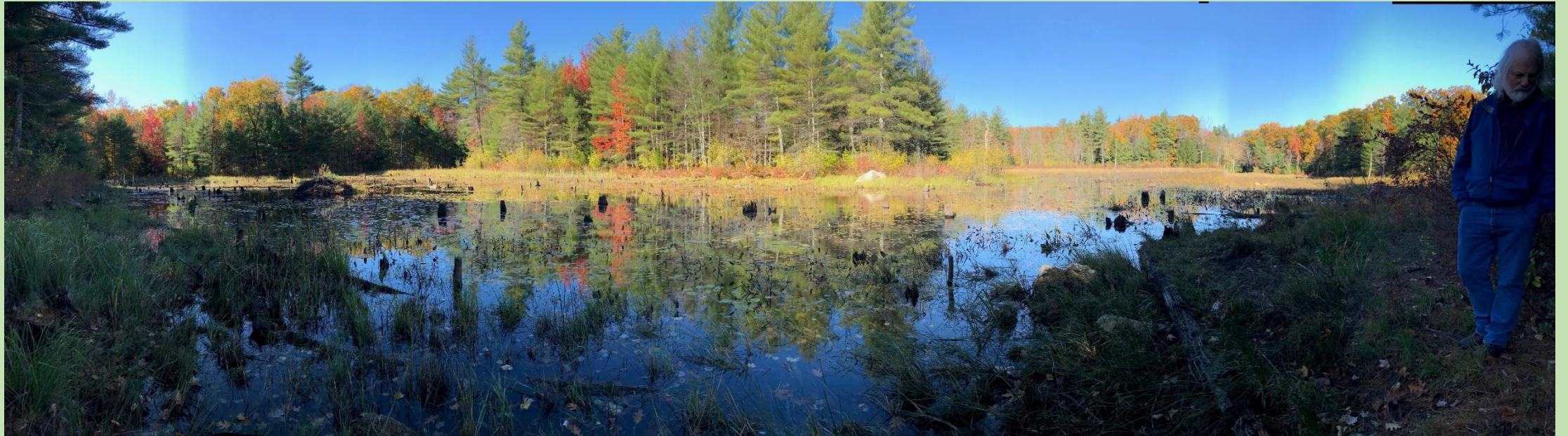
PRESENTED BY CHRIS WELLS

PRESIDENT & EXECUTIVE DIRECTOR



OVERVIEW

- 2020 Highlights: Land Protection, Stewardship & Outreach
- 2020 Finances
- The Year Ahead
- Current Priorities / Questions for the Future



2020 HIGHLIGHTS:

LAND PROTECTION

SHEEHAN — MYERS CE

36 ACRES, WEARE, OCT. 2019



Boundary is an approximation and does not represent survey accuracy. Uses OS
USDA, USGS, AEX, Getmapping, Aerogrid, IGN, IGP, swisstopo, and the GIS User
Community

A.5 Aerial Photo Map

9/24/2019

Sheehan/Myers CE
35.83 acres
Weare, NH

Map Preparer: T.E. Jones

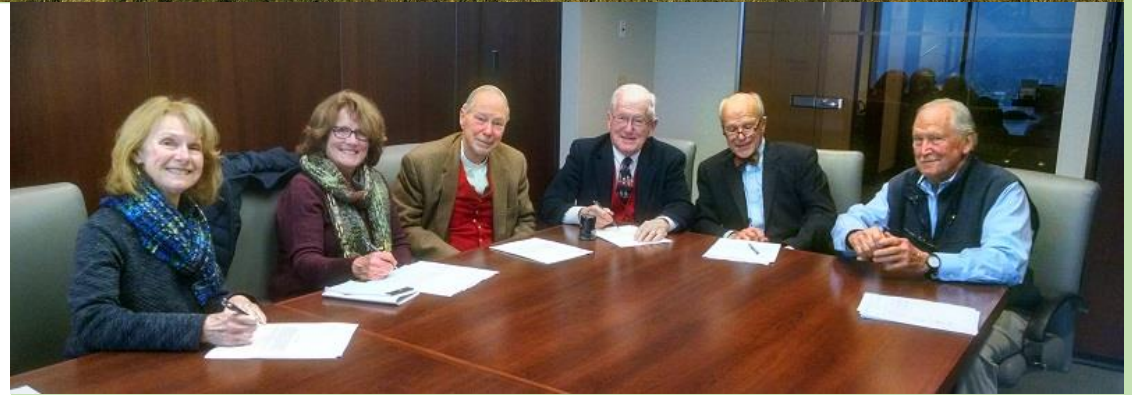
Sheehan/Myers CE
Sheehan Lot 409-207

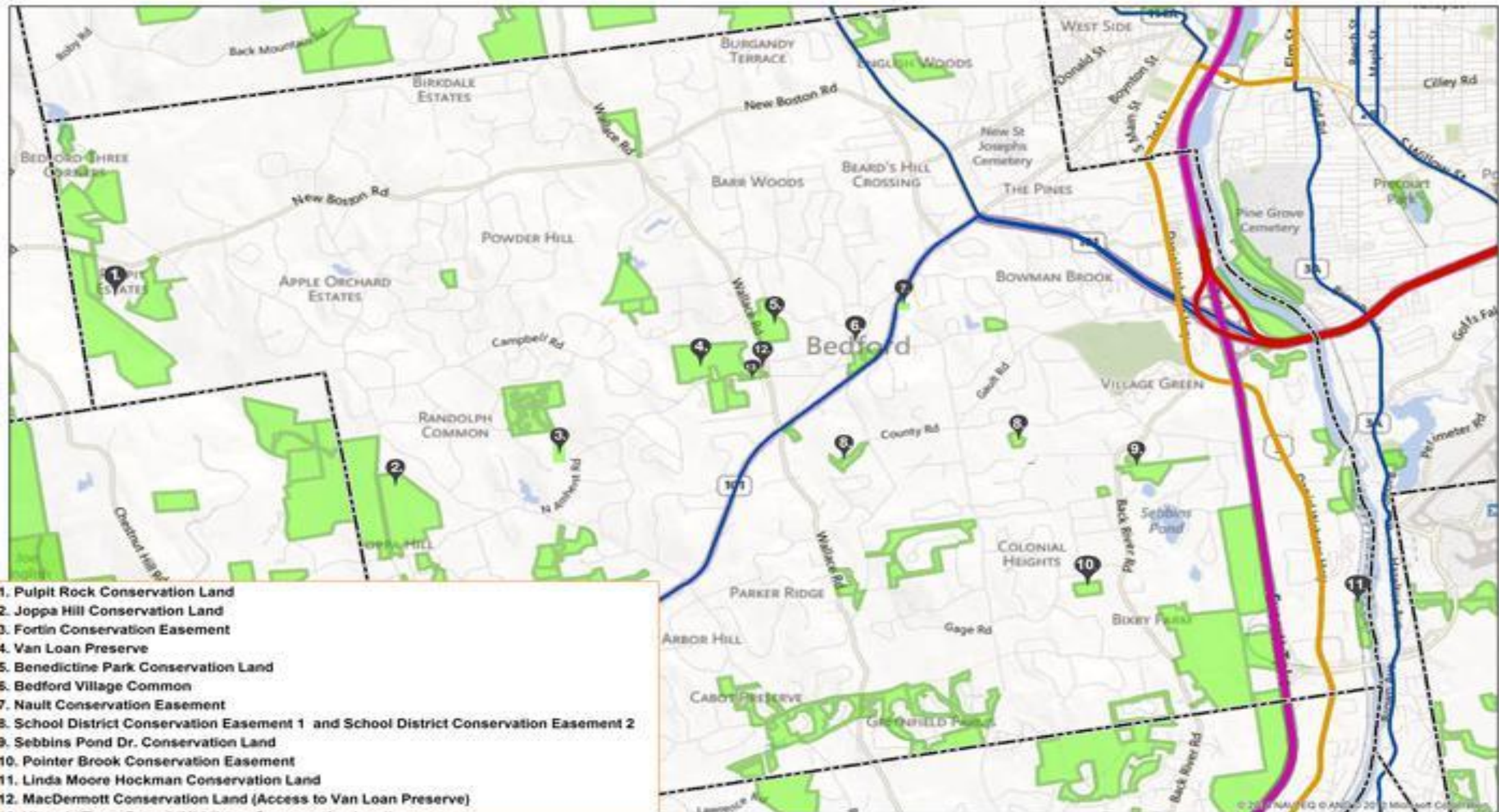
0 110 220 Feet



BEDFORD LAND TRUST MERGER

710 ACRES (12 CE, 2 FEE), DEC. 2019

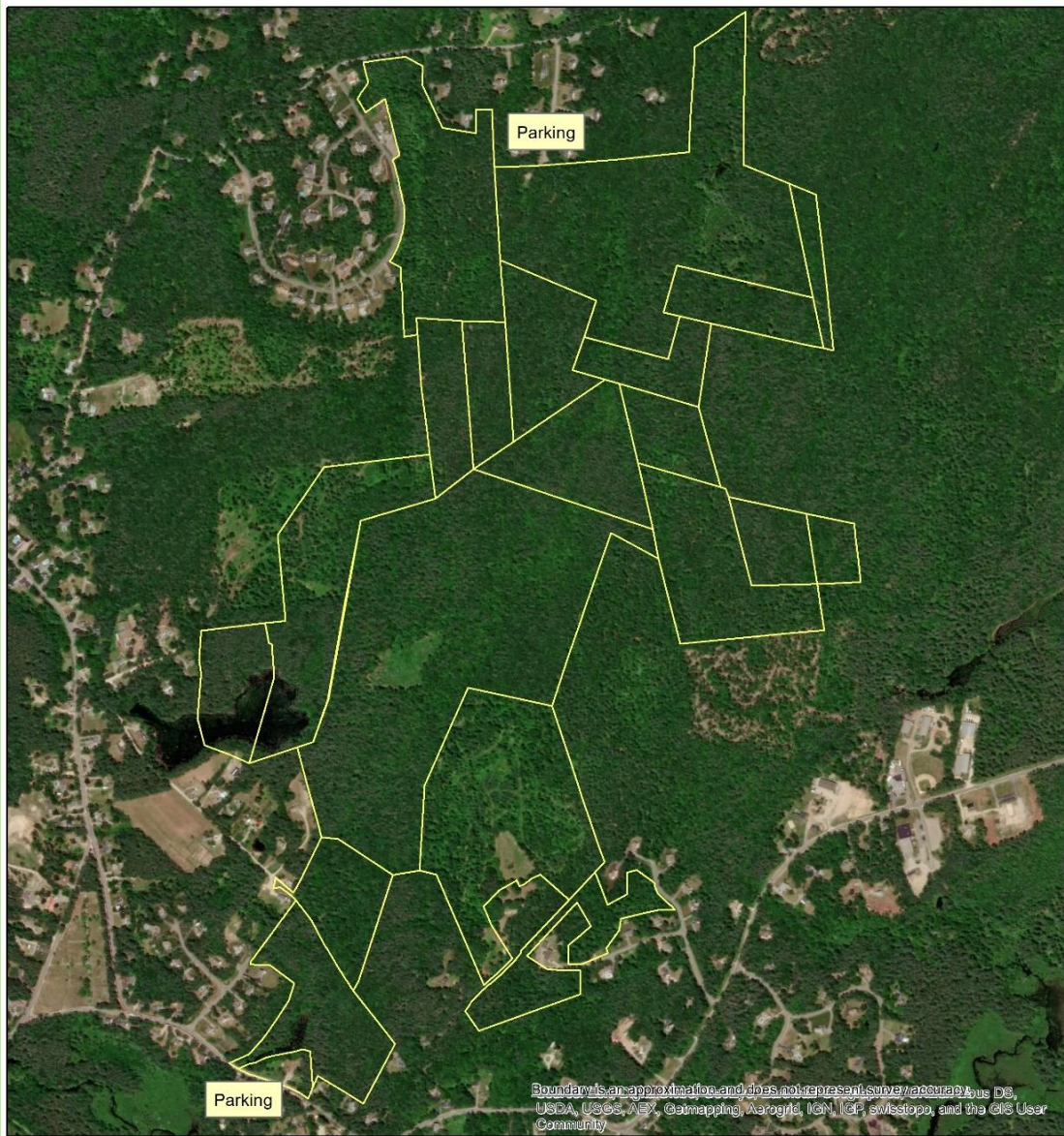




1. Pulpit Rock Conservation Land
2. Joppa Hill Conservation Land
3. Fortin Conservation Easement
4. Van Loan Preserve
5. Benedictine Park Conservation Land
6. Bedford Village Common
7. Nault Conservation Easement
8. School District Conservation Easement 1 and School District Conservation Easement 2
9. Sebbins Pond Dr. Conservation Land
10. Pointer Brook Conservation Easement
11. Linda Moore Hockman Conservation Land
12. MacDermott Conservation Land (Access to Van Loan Preserve)
13. Historic Town Pound (Middleton Conservation Land)

HOBART-FESSENDEN WOODS CE

439 ACRES – BROOKLINE, MAY 2020



LPC / SC Site Walk

Hobart-Fessenden Woods
439 +/- Acres
Brookline, NH


6/20/2018

Map Preparer: T.E. Jones



 Hobart-Fessenden Woods

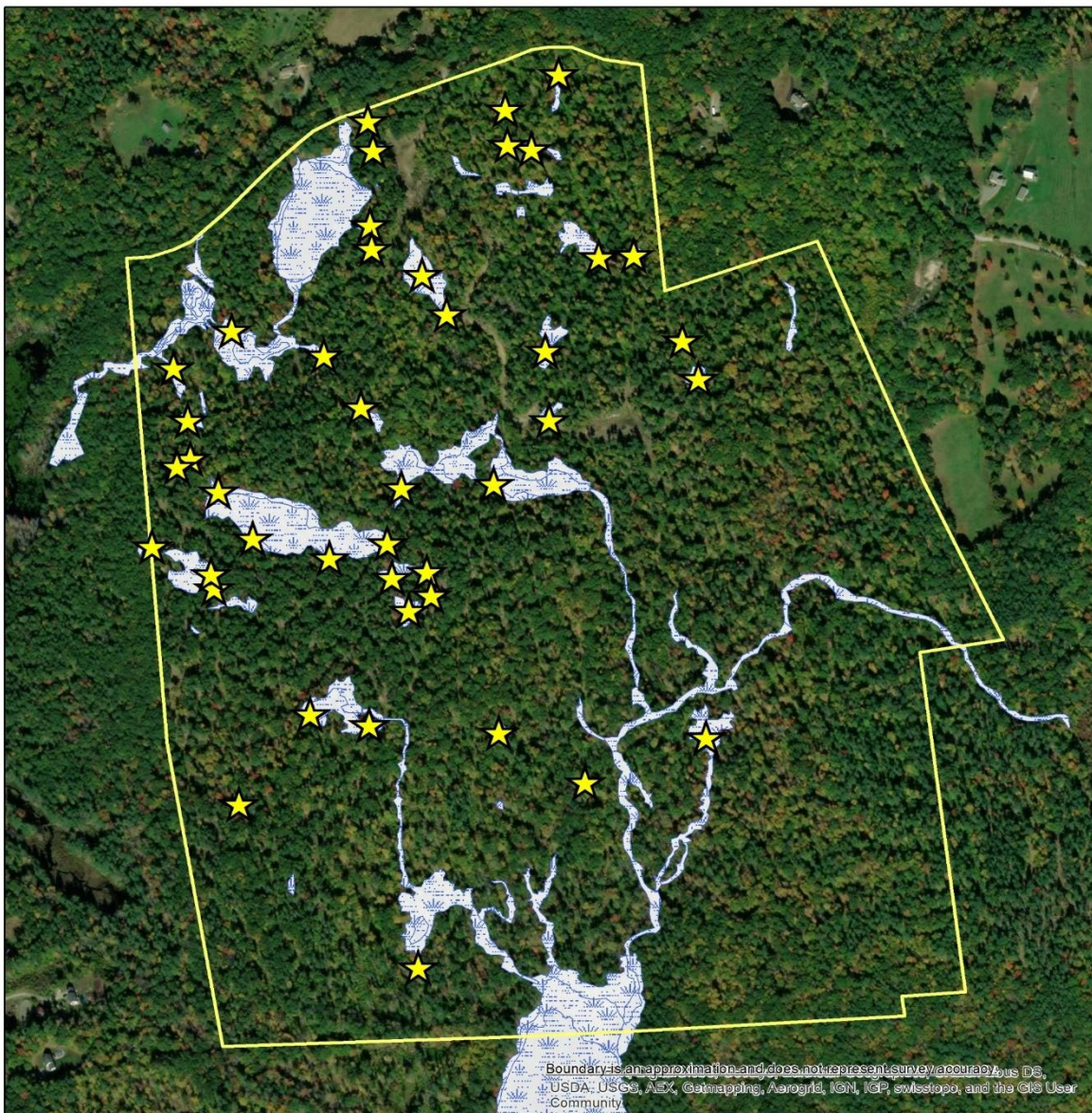


0 490 980 Feet




NISSITISSIT HEADWATERS

267 ACRES – MASON, JUNE 2020



★ Vernal Pools
Project Property
Wetlands Mapped 8/2019

Aquatic Resources
Nissitissit River Headwaters
274 +/- acres
Mason, NH

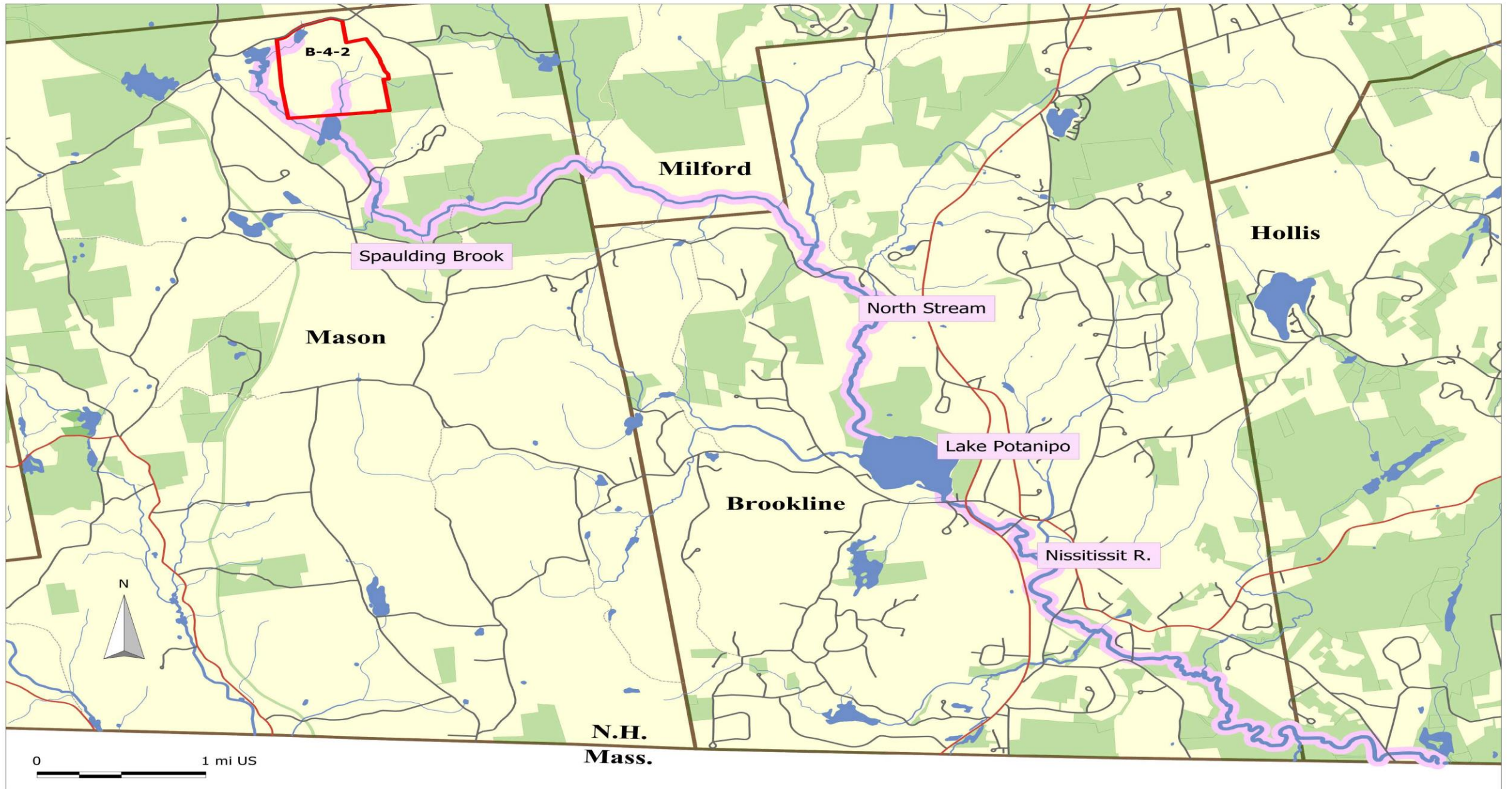
12/10/2019
Map Preparer: T.E. Jones

0 370 740 Feet

ACCREDITED
LAND TRUST
Piscataquog
Land Conservancy
Excellence - Trust - Permanence



Parcel B-4-2 Showing Connection to Nissitissit River



CUMULATIVE ACRES PROTECTED



2020 HIGHLIGHTS: LAND & CE STEWARDSHIP



- 100% monitoring completed.
- 5 new volunteer monitors trained.
- Dedication of Bob's Trail at Blackbrook Preserve.
- Workday on Rose Mountain Preserve in Lyndeborough. Summit view clearing, trail re-route.
- 3rd and final gate installed at Rose Mountain.
- Hailey goes full time!
- New trails and chain saw use policies.
- New trail entrances for Blackbriar Woods in Goffstown
- Trail upgrades at Tarr Sanctuary in Bedford/Goffstown.



2020 HIGHLIGHTS: OUTREACH & EVENTS

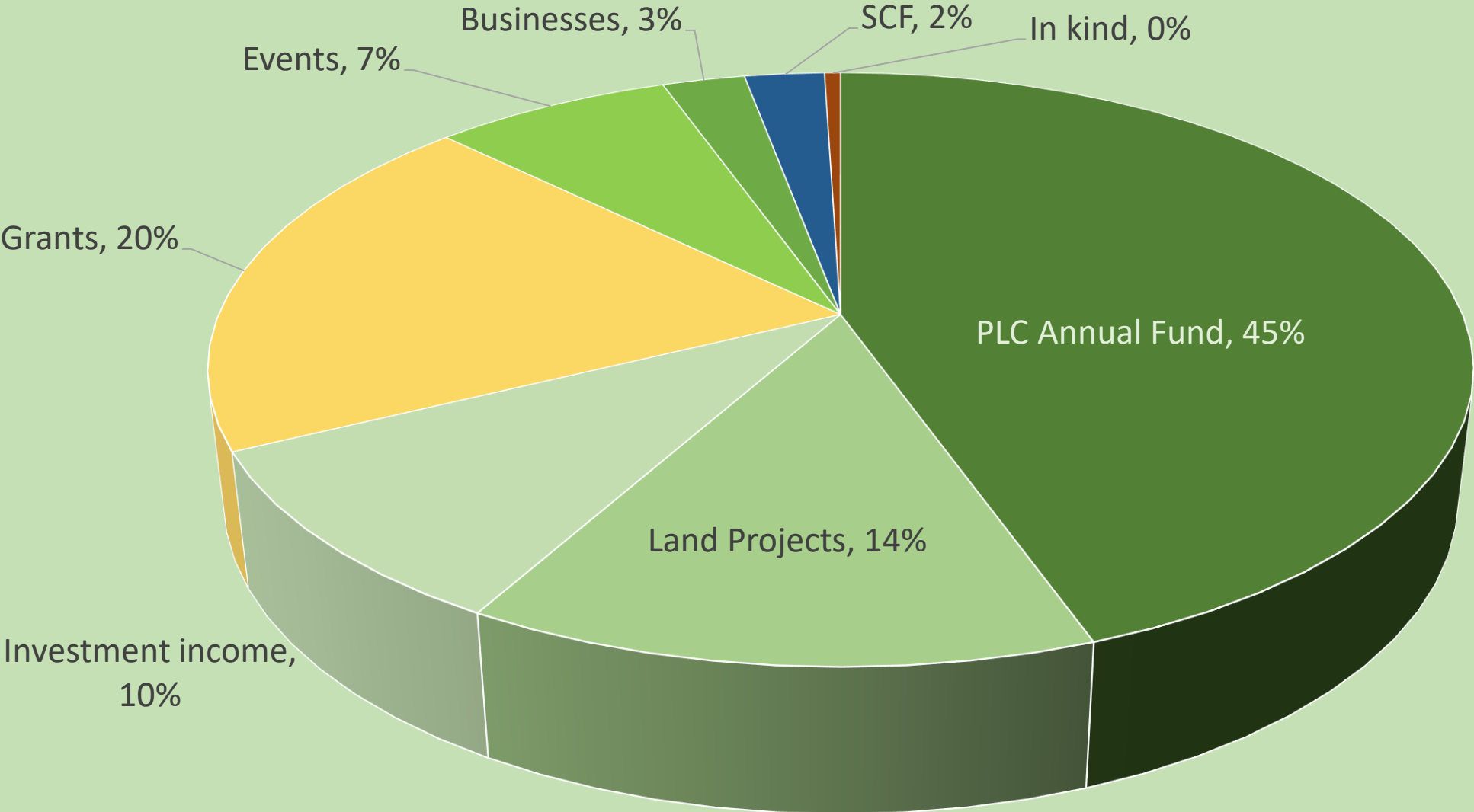


- 7 public walks and 1 paddle July 2019-March 2020.
- 5th Annual Rose Mountain Rumble attracts 115 riders.
- 11th Annual Lobster by the River in September 2019.
- Covid leads us to suspend public outings in March 2020.
- PLC newsletter goes full color with Spring 2020 issue.
- Monthly e-news continues, we add an Instagram page.
- Student team from SNHU create social media plan.

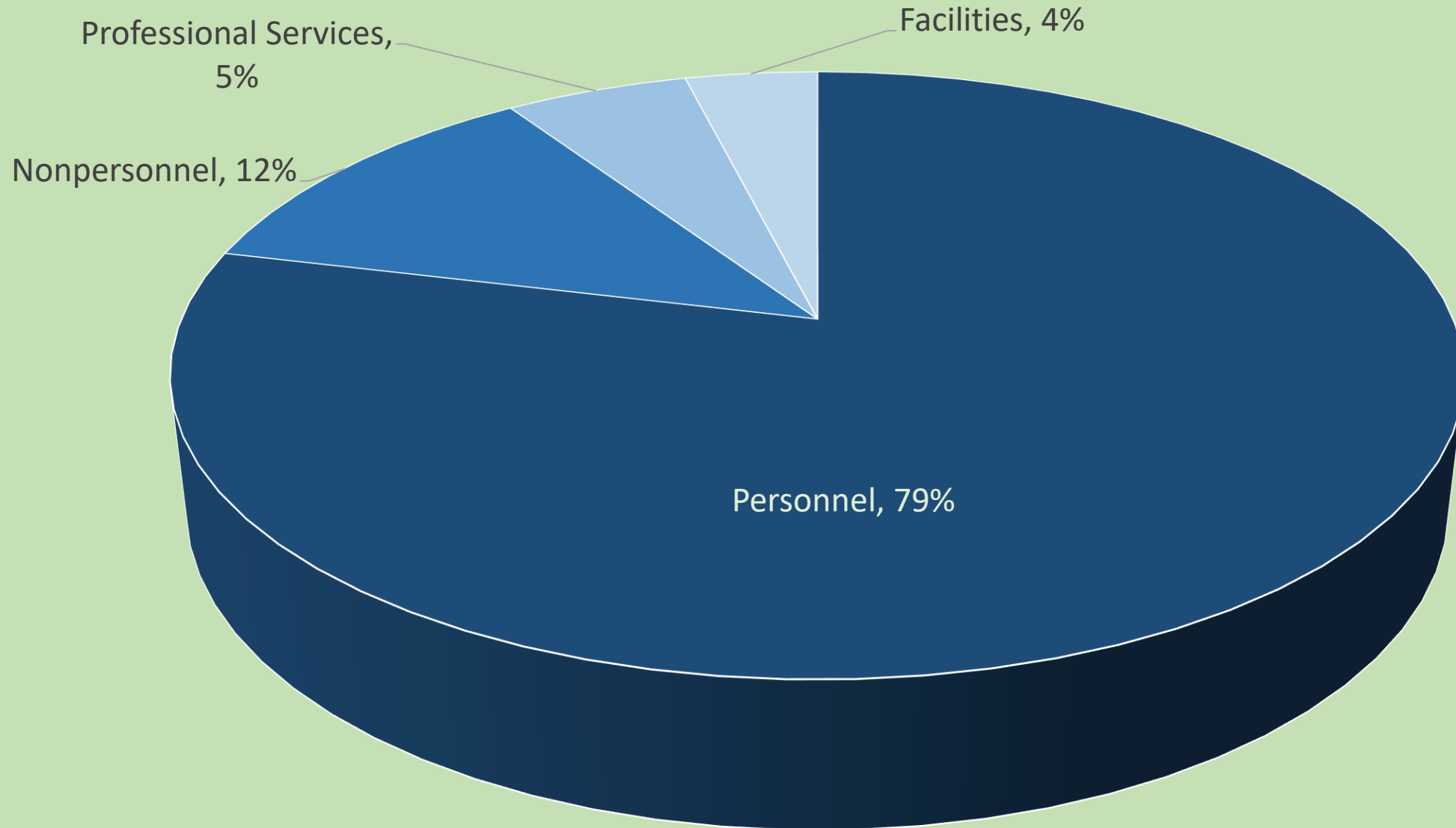


FINANCIALS

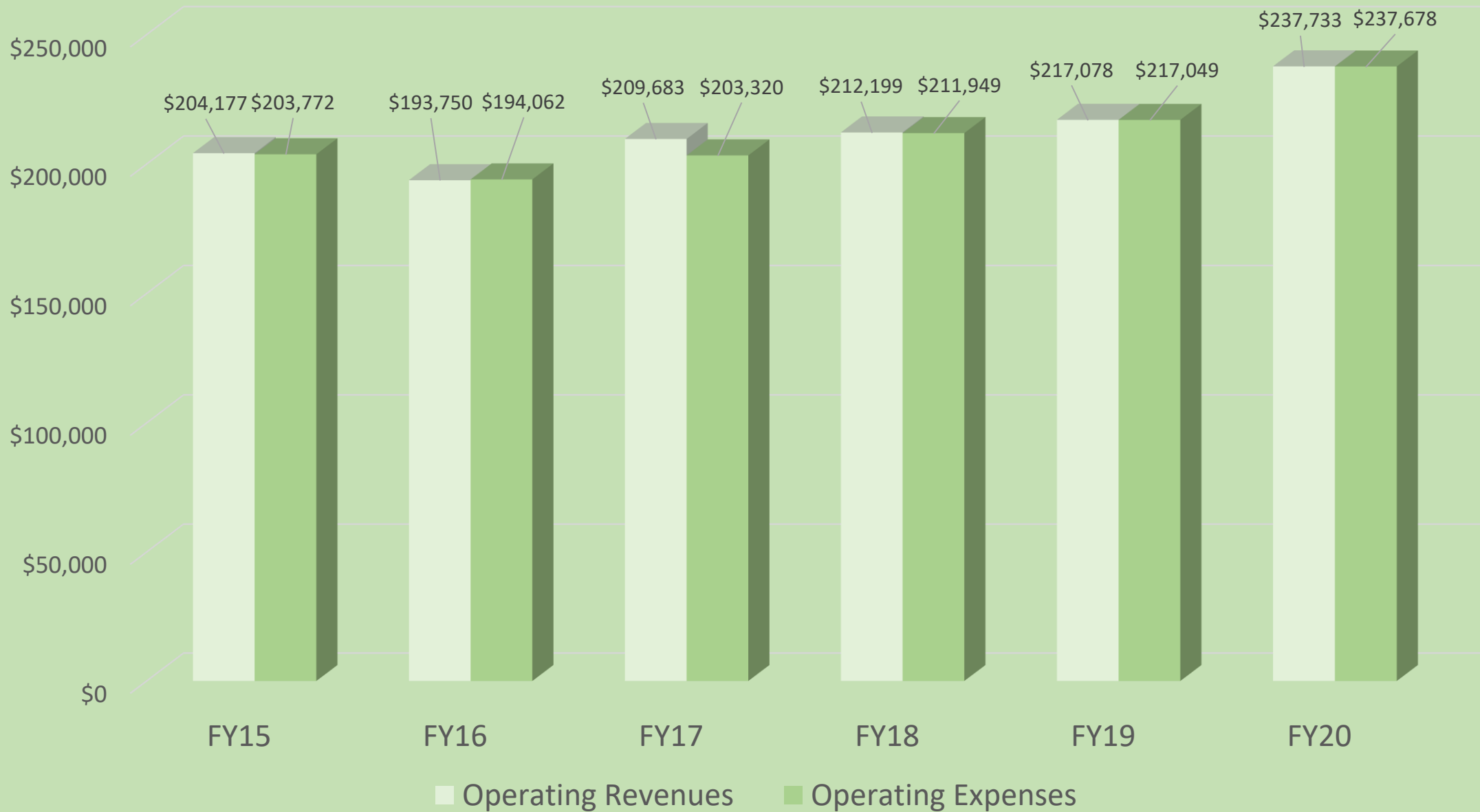
PLC FY20 OPERATING BUDGET (237K) - INCOME SOURCES



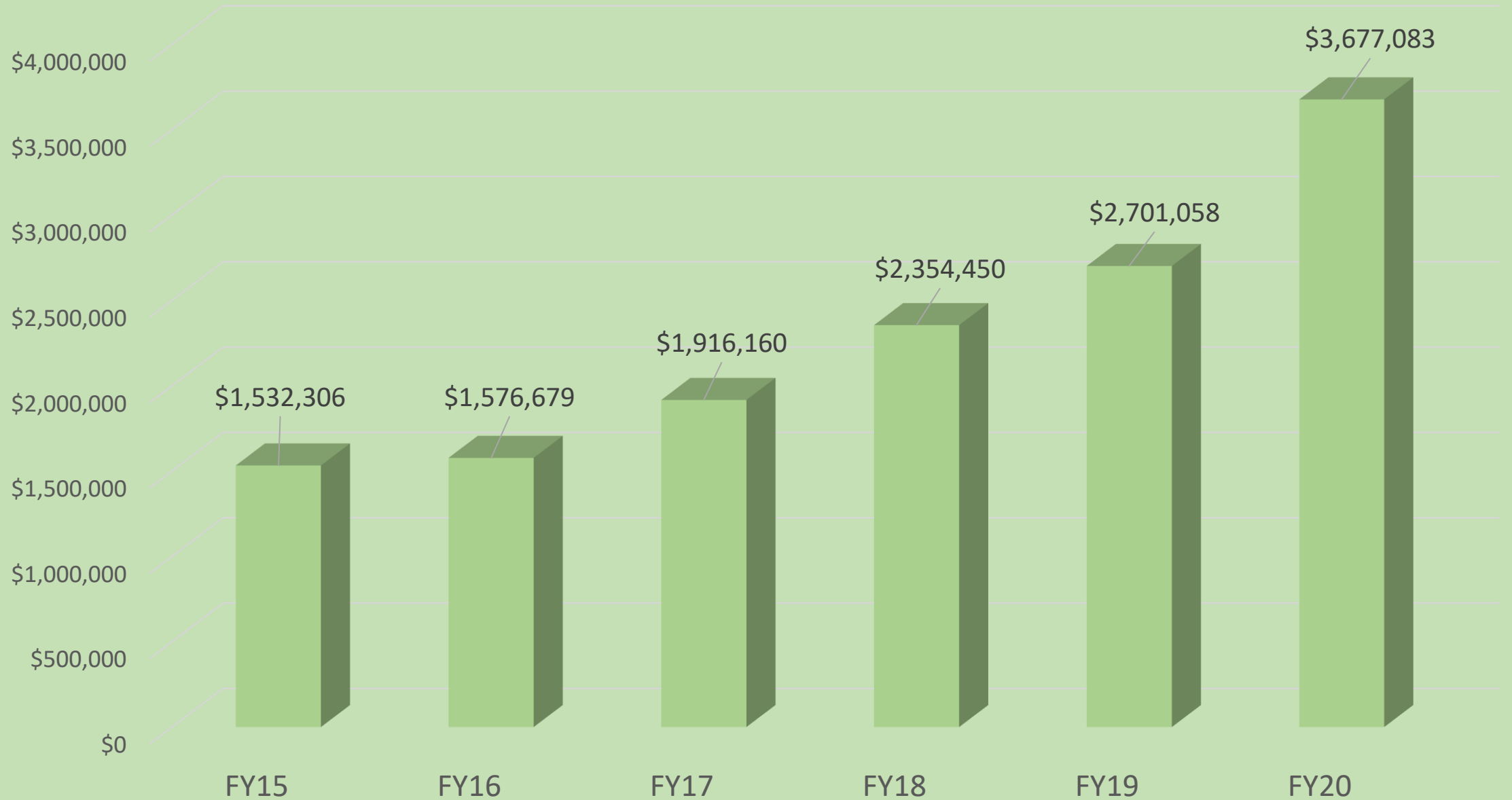
PLC FY20 OPERATING BUDGET (237K) - EXPENSES



OPERATING REVENUES V. EXPENSES



NET ASSETS



CASH & INVESTMENTS V. LANDS



THE YEAR AHEAD (FY21)

LAND PROTECTION

- New Boston Town Forests CE, 441 acres
- Burnes and Gibney CEs, Goffstown, 56 ac.
- Deering Town Lands CE, 89 acres
- Lyndborough Town Forest CE, 17 acres

STEWARDSHIP

- Maintain 100% property monitoring
- Continue to integrate BLT easements (boundary work, signage, etc.)
- Work days (Covid permitting) to build and maintain trails, etc., including on recently-acquired lands in Weare and Mason.



THE YEAR AHEAD, CONT.

STEWARDSHIP

- Continue effort to make PLC properties more welcoming & user-friendly - e.g. web page with info. on “featured” recreational properties, including downloadable trail maps and guides.
- Develop a long-term needs assessment and management plan for PLC properties, and work schedule for trail development and maintenance.

OUTREACH

- Re-start limited outings following Covid protocols during balance of fall through winter 2020-21.
- If/as Covid epidemic begins to wane, get back to more frequent outings in spring 2021.
- Summer 2020: 6th Annual Rose Mountain Rumble, 50th Anniversary Celebration at Shirley Farm

STRATEGIC PRIORITIES FOR 2021 AND BEYOND

- Maintain the pace and strategic quality of our land protection work, even if state funding sources drop.
- Continue to seek opportunities to do land conservation projects in Souhegan and Nashua R. expansion towns, and other towns where we have not worked in a while (e.g. Greenfield, Dunbarton, etc.).
- Maintain the high quality of our stewardship program, and make the growing network of PLC-owned lands a recreational resource for the people of our region.
- Maintain our program of volunteer-led recreational outings, and explore partnerships with schools and other orgs. to reach more kids and families.
- Continue to balance our operating budgets, and meet or exceed LTA requirements for stewardship and legal defense endowments.
- Grow newly established Land Opportunity (250K goal) and Stewardship Capacity (50K goal) funds. Possibly launch a new “Next Generation” Outreach fund.

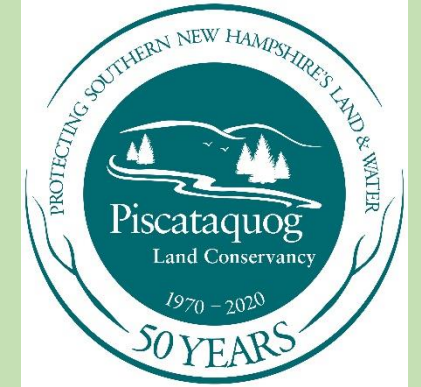
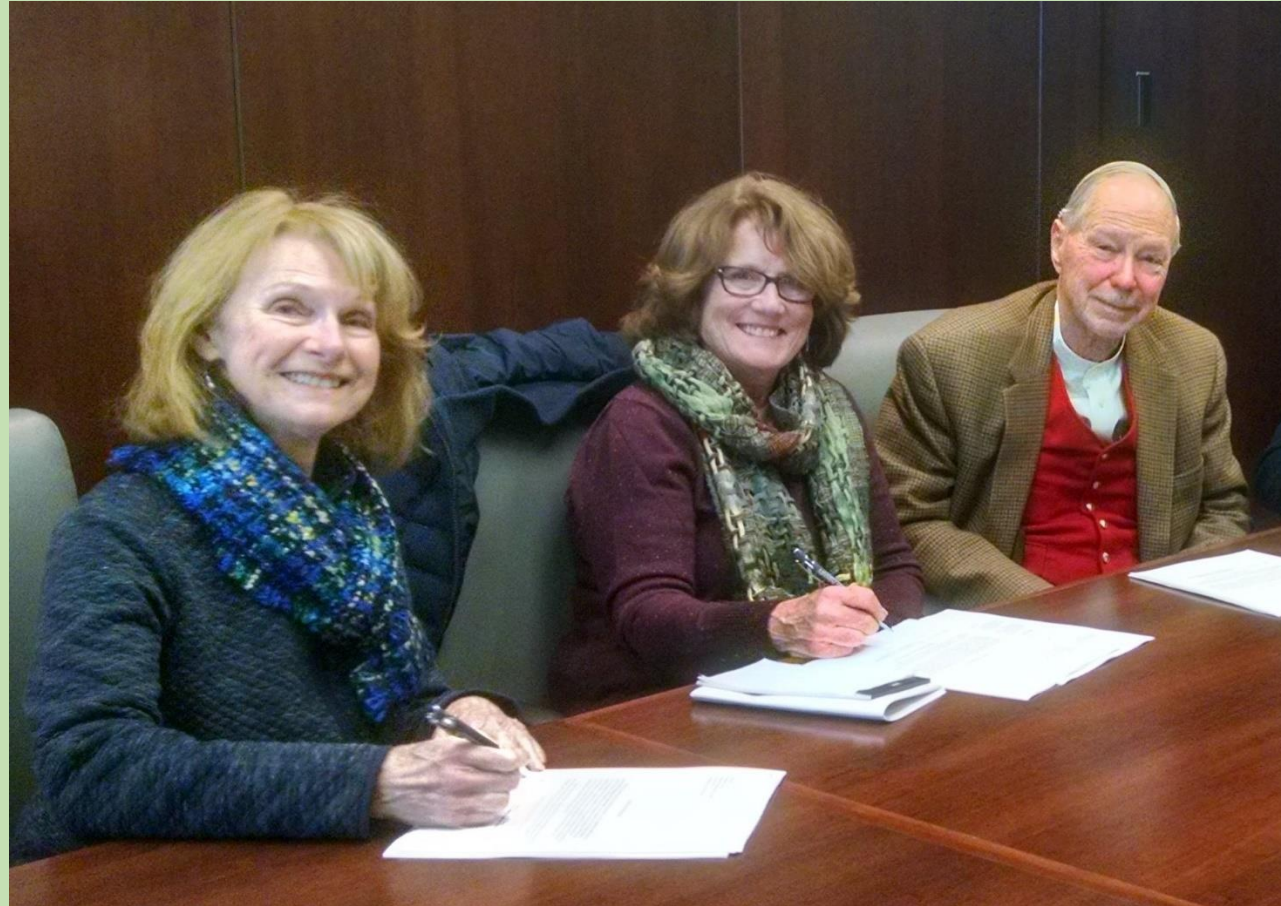
THINGS TO THINK ABOUT...

- Can/should we reinvigorate the educational partnerships and “citizen-science” efforts (water quality monitoring, stream bank restorations, wildlife studies, etc.) that were a major emphasis for PWA in the 1980s and 90s?
- Can/should we find ways to be active in the cities of Manchester and Nashua that fit our mission, meet a real need, and are sustainable?
- Are there ways PLC can help our region (and NH) meet its renewable energy & climate goals? E.g. land management, carbon credits, partner on renewable energy projects?

THANK YOU!



PLC 2020 VOLUNTEERS OF THE YEAR
JEANENE PROCOPIS, RITA CARROLL, & JOHN MONSON
BEDFORD LAND TRUST



WITH GRATITUDE FROM THE PISCATAQUOG LAND
CONSERVANCY